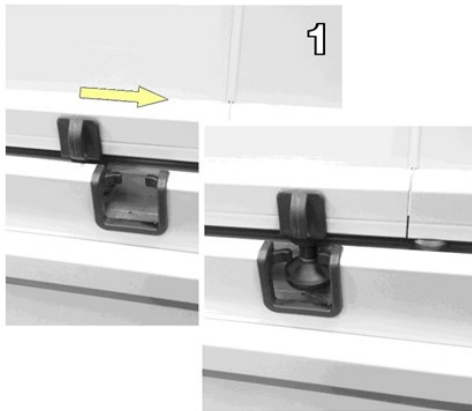


# Instruction manual for balcony and terrace glazing

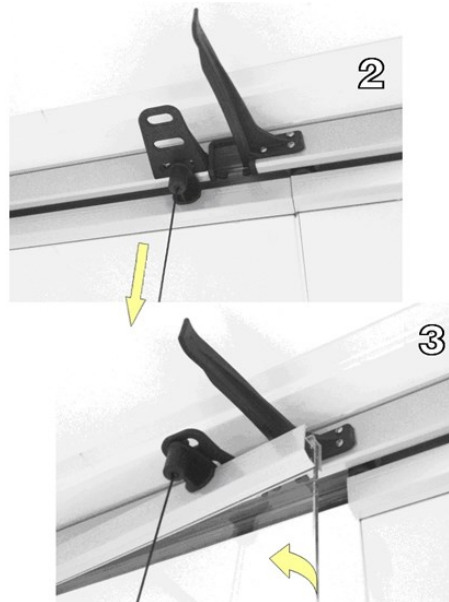
The openable balcony and terrace glazing system comprises the upper and lower aluminium steering profile and tempered glass panels fitted with roller bearings. The design of the rollers and profiles allows the glass panels fitted between the profiles to be moved one after the other.

To ensure the longevity of the system, the system should be serviced in accordance with the user and maintenance manual twice a year at minimum, and it is recommended to order professional maintenance service every two years.

- 1** To open the first glass panel, release the latch fastened to the lower glass panel profile with one hand...



- 2** ...and open the ventilation positioner at the top using your other hand, pulling the cord downwards, opening the outer glass panel 90° inwards.



- 4** The next glass panel can be moved to the position of the first glass panel and again turned 90° inwards. Glass panels can be moved using the handle on the glass profile or by holding the edge of the glass panel. Open the remaining glass panels and lock them in the open position. Glass panels can be closed in the reverse order.

**As a result, glass panels can be folded inwards against the wall like pages in a book.  
Your balcony or terrace is fully open.**

- Balcony glazing in the open position must always be folded to the wall using the fastening cord, which must be tied around the lower rollers. Open glass panels must always be fastened using a door stopper or another suitable solution.
- In strong winds and when leaving home, glass panels must always be closed, making sure to also lock the lower opening latch.

Video instructions are available on our website

<https://malmerkklaasium.ee/en/products/balcony-glazing/introduction/>

# Maintenance manual for balcony and terrace glazing

Although the balcony and terrace glazing system is considered a maintenance-free product throughout its service life, it is nevertheless wise to periodically clean and service a product with moving parts.

Strong winds and high temperature fluctuations affect the structures to which the system is installed and, as a result, the system may need to be readjusted.

## 1

### Maintenance of glass panels

Glass panels are easy to wash on the inside when they are in the closed position and on the outside when they have been turned 90° inwards. Glass panels can be washed using any household glass cleaners.



## 2

### Maintenance of profiles

The insides of the lower profile should be cleaned of accumulated debris and dust at least once a year. For external maintenance, washing the profiles with a damp cloth is enough.

#### DO NOT USE:

- Abrasive (coarse) cleaning agents and solvents
- Industrial cleaning agents
- Cleaning agents containing solvents or corrosive cleaning agents
- Rough materials – steel wool, scouring pads, etc.

The Malmerk Klaasium balcony and terrace glazing system is designed to last for decades. As the structures are open to winds and, as a result, to vibration, its fastenings must be inspected every two years.

To ensure the maximum service life of the product, order professional maintenance service from the distributor of the system at least every two years.

#### MAINTENANCE CONTACT

Tallinn

[+372 5361 3000](tel:+37253613000)

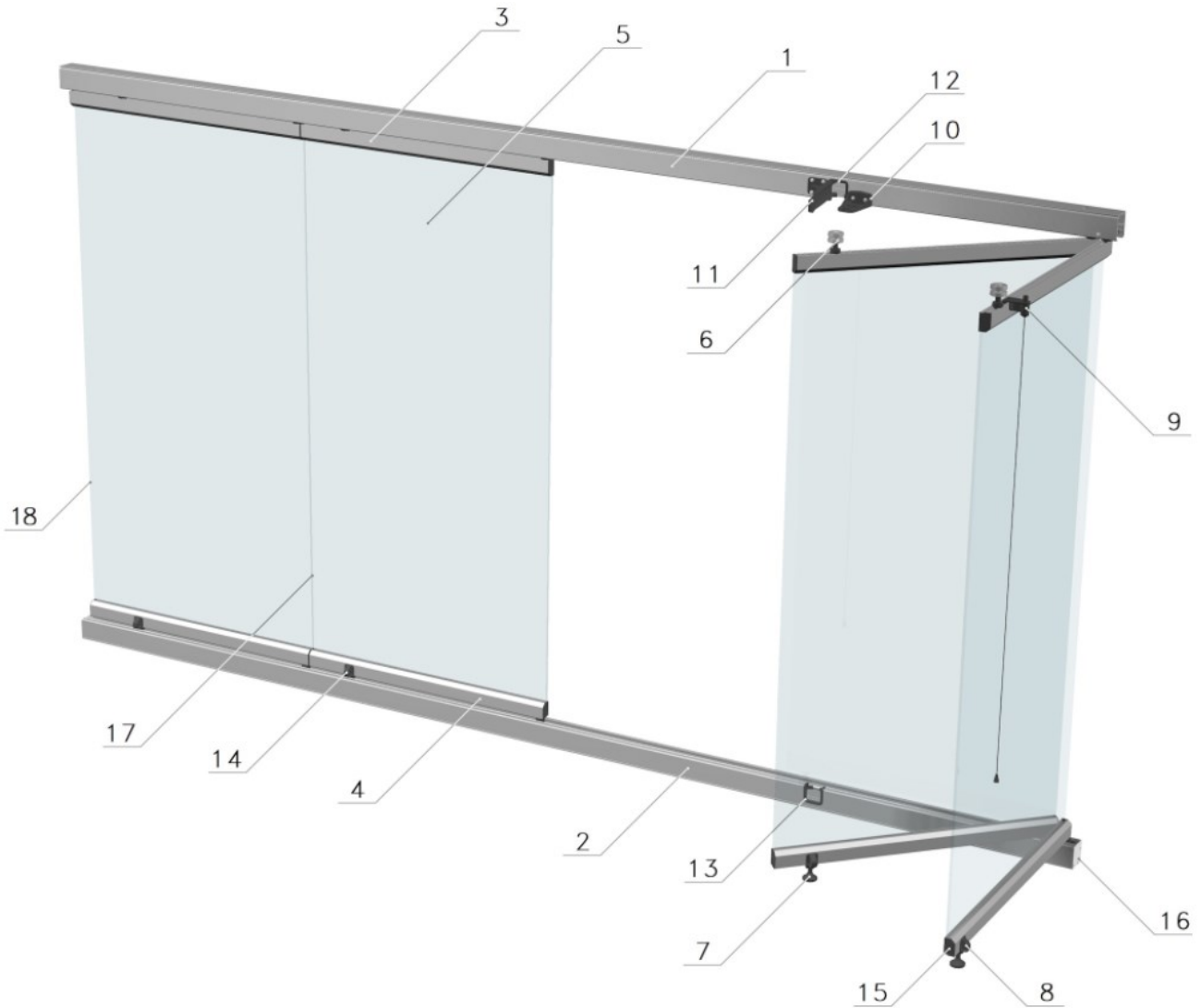
[hooldus@malmerk.ee](mailto:hooldus@malmerk.ee)

Tartu

[+372 736 0041](tel:+3727360041)

[klaasium@malmerk.ee](mailto:klaasium@malmerk.ee)

## Glazing system and components



1 Upper steering profile

2 Lower steering profile

3 Upper glass panel profile

4 Lower glass panel profile

5 Glass panel

6 Upper opening rollers

7 Lower opening roller

8 Lower opening latch

9 Ventilation positioner

10 Ventilation position holder

11 Roller support

12 Upper opening-hole cover

13 Lower opening-hole cover

14 Opening handle

15 Glass panel profile end cap

16 Bottom steering profile end-plate/cap

17 Optional weather strip between glass panel

18 Optional weather strip to walls